

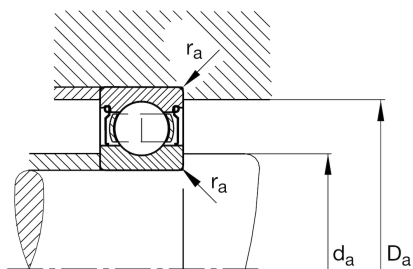
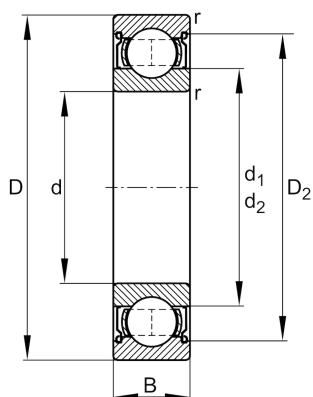
FAG

**6301-2Z**

Deep groove ball bearing

Schaeffler ID:  
0167226710000Deep groove ball bearing 63...-2Z, single  
row, shields, steel sheet metal cage

## Technical information

**Dimensions**

|            |         |                              |
|------------|---------|------------------------------|
| $r_{\min}$ | 1 mm    | Minimum chamfer dimension    |
| $D_2$      | 31.4 mm | Caliber diameter outer ring  |
| $d_1$      | 19.5 mm | Shoulder diameter inner ring |
|            | 59.8 g  | Weight                       |

**Main Dimensions & Performance Data**

|          |              |                                   |
|----------|--------------|-----------------------------------|
| $d$      | 12 mm        | Bore diameter                     |
| $D$      | 37 mm        | Outside diameter                  |
| $B$      | 12 mm        | Width                             |
| $C_r$    | 10,300 N     | Basic dynamic load rating, radial |
| $C_{0r}$ | 4,200 N      | Basic static load rating, radial  |
| $C_{ur}$ | 290 N        | Fatigue load limit, radial        |
| $n_G$    | 24,000 1/min | Limiting speed                    |
| $n_{gr}$ | 20,000 1/min | Reference speed                   |

**Mounting dimensions**

|             |         |                                      |
|-------------|---------|--------------------------------------|
| $d_{a\min}$ | 17.6 mm | Minimum diameter shaft shoulder      |
| $D_{a\max}$ | 31.4 mm | Maximum diameter of housing shoulder |
| $r_{a\max}$ | 1 mm    | Maximum fillet radius                |

**Calculation factors**

|       |      |                    |
|-------|------|--------------------|
| $f_0$ | 11.1 | Calculation factor |
|-------|------|--------------------|

**Temperature range**

|            |        |                            |
|------------|--------|----------------------------|
| $T_{\min}$ | -20 °C | Operating temperature min. |
| $T_{\max}$ | 120 °C | Operating temperature max. |